

## WakeSense 4weeks

2023, SCUT, Guangzhou

Design Performance Coursework

Guidance Teacher: Mi Lin

Personal Works



## Research Report Storyboard



## Product Positioning

WakeSense is a multifunctional wake-up alarm clock designed for students and those who require sleep quality. By gently awakening through light and odor, it helps users wake up naturally in a comfortable environment.

### User Analysis

**Student group:** Students usually have irregular sleep patterns and require a gentle way of arousal to avoid overly stimulating alarm sounds.

**People with sleep quality requirements:** For those who have sleep quality requirements, such as those who are easily awakened by noise or have difficulty falling asleep, WakeSense can help improve sleep quality.

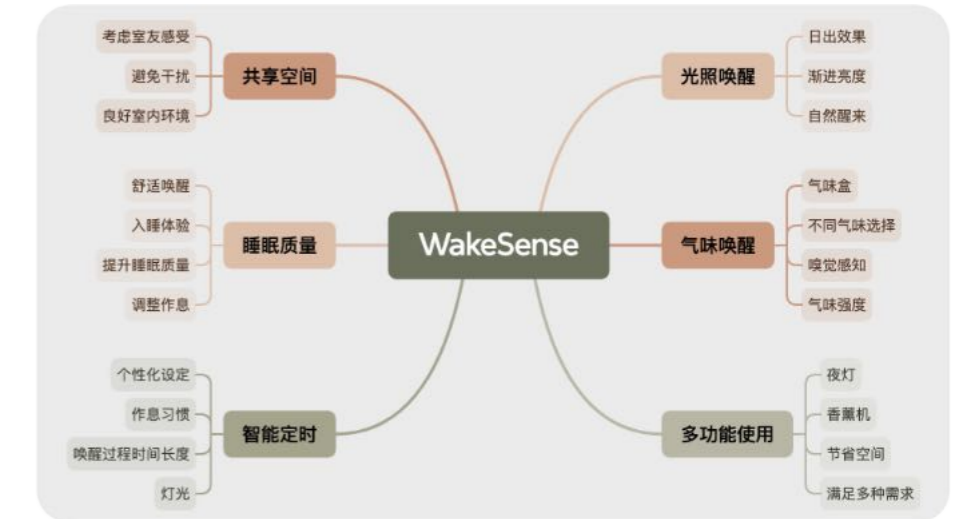
### Using Environmental Analysis

**Space limitation:** Student dormitories have limited space and need to save space. The compact design of WakeSense can take up very little space.

**Shared space considerations:** Student dormitories are a shared living space that needs to consider the feelings of roommates. WakeSense can avoid the harsh sound generated by traditional alarms and reduce interference with roommates.

**Sleep quality concerns:** Students may face academic and life pressures and may have difficulty falling asleep at night. WakeSense helps to relax the body and mind, create a good sleep environment, and improve sleep quality.

## Mind Map



## Keyword

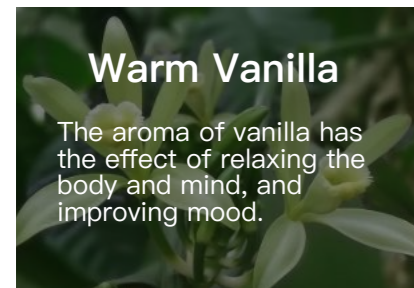




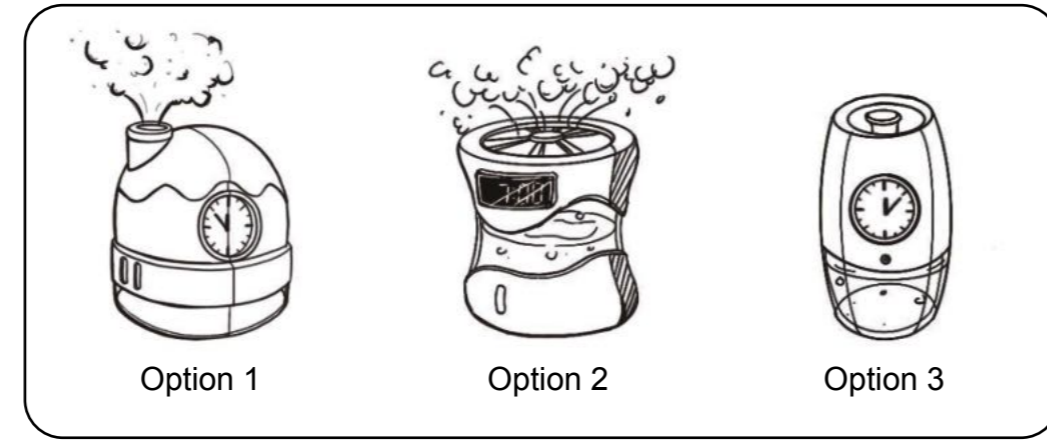
## Brand Logo



## Odor Design



## Sketching Scheme



## Explosion Diagram

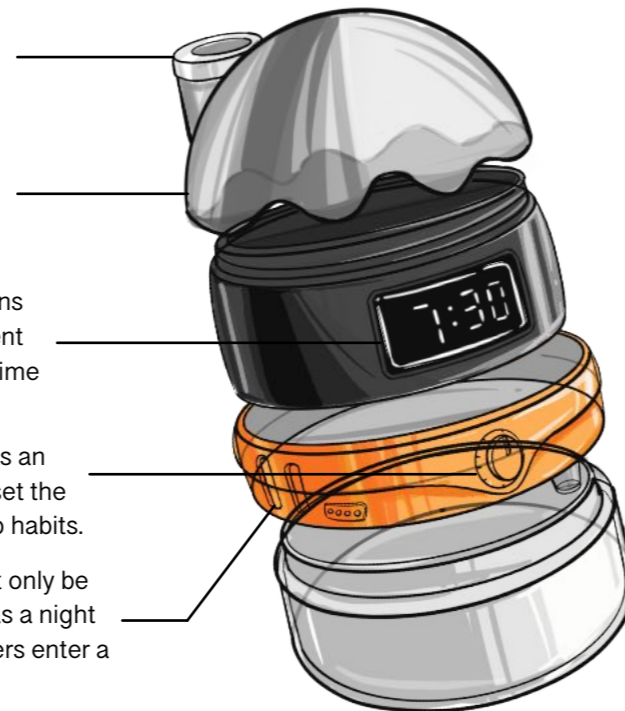
**Odor component:** The odor emits from here, stimulating and awakening the human sense of smell.

**Lighting component:** WakeSense can simulate the effect of sunrise. At the set time point, the light will gradually brighten from a faint dim light.

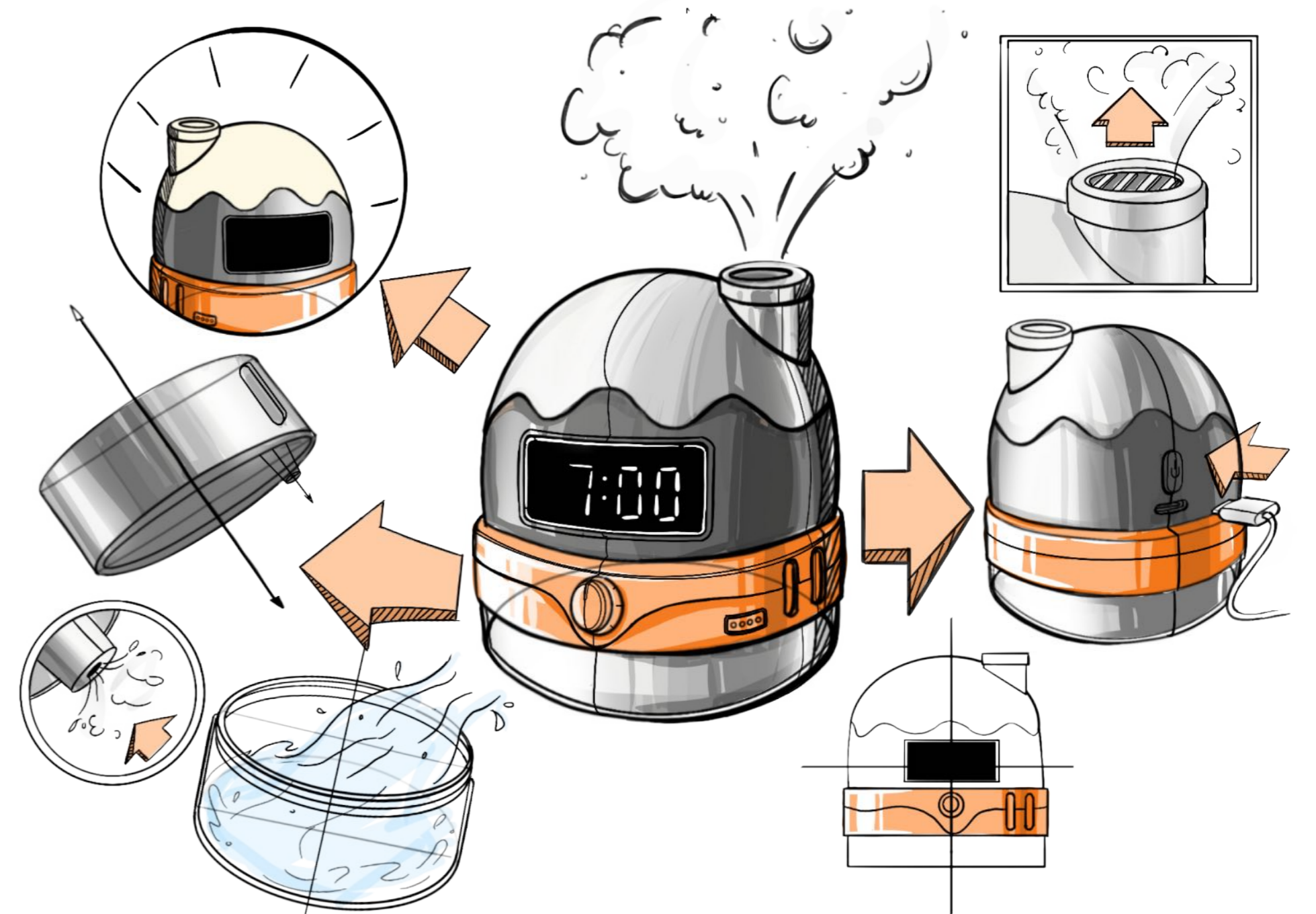
**Smart display screen:** Smart display screens can be used for display purposes in different scenarios, such as displaying the current time and displaying the scheduled time.

**Intelligent timing function:** WakeSense has an intelligent timing function, and users can set the wake-up time according to their own sleep habits.

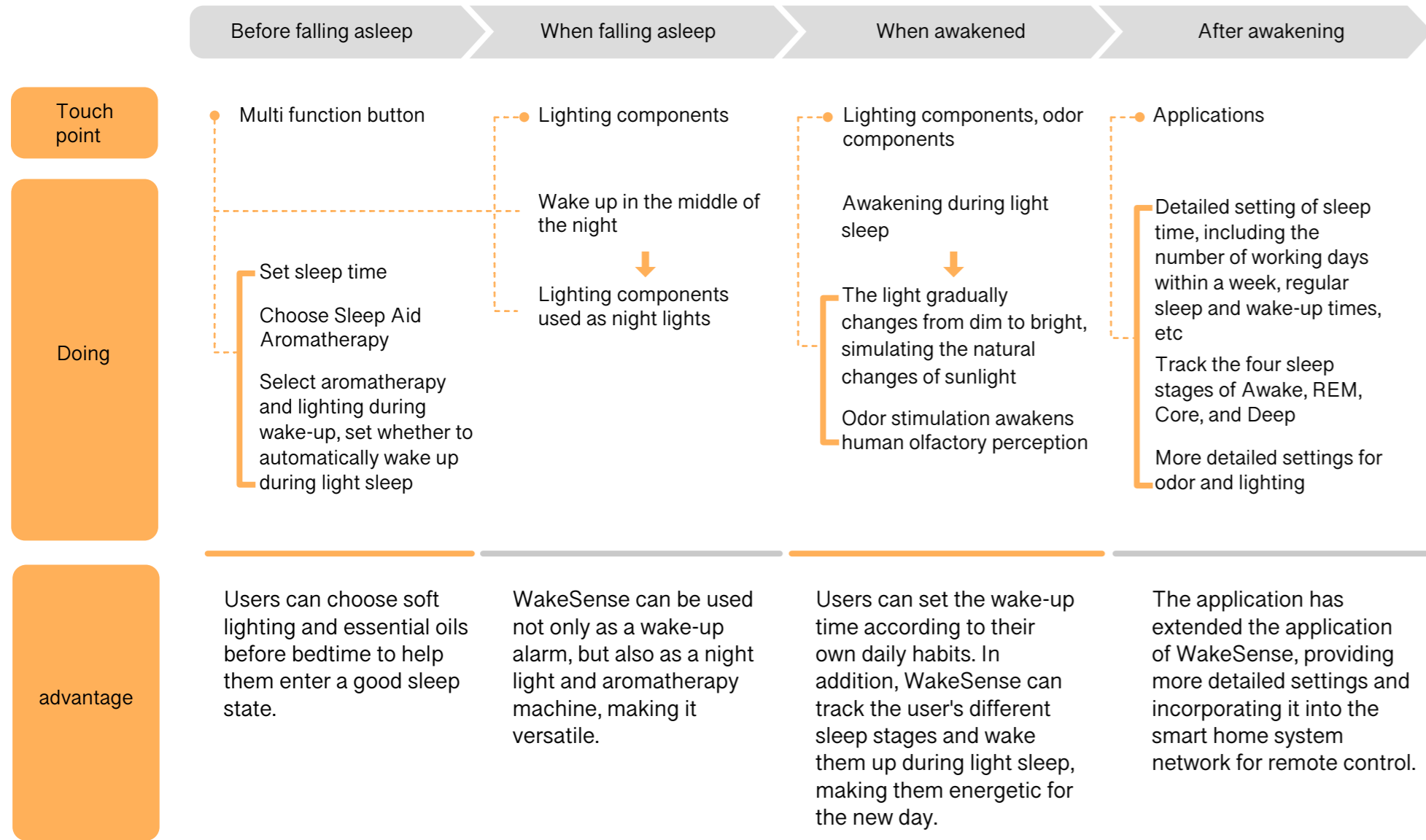
**Multi function button:** WakeSense can not only be used to wake up an alarm clock, but also as a night light and aromatherapy machine. Help users enter a good sleep state.



## Sketch



## Usage Steps



## Interface Design

